

SONY

EVERSPAN

EVERSPAN

8-channel drive optical drive to achieve high transfer rates

Horst Schellong
VP Sales, Sony Optical Archive Inc.

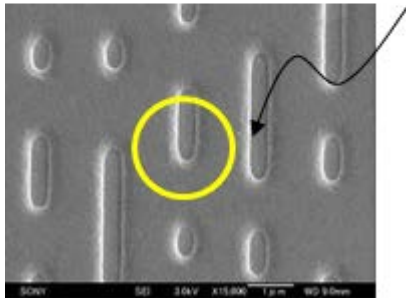
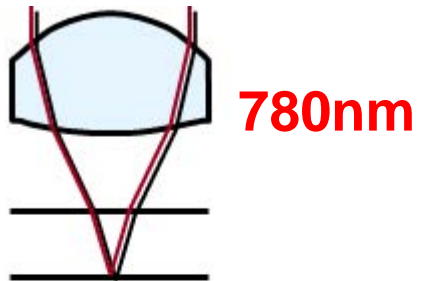
EVERSPAN

Copyright 2016 Sony Optical Archive Inc.

Optical technology for professional archiving

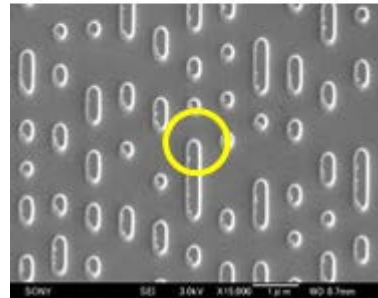
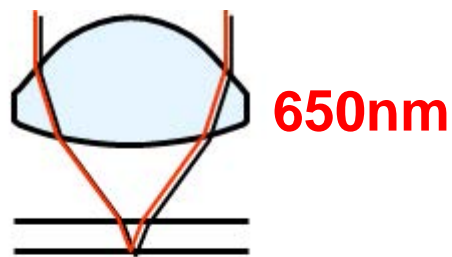
Consumer

CD(1982)



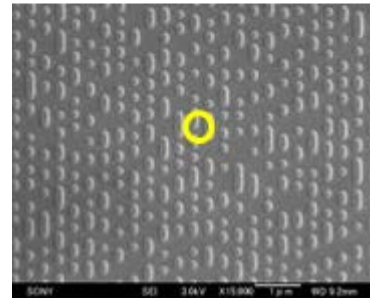
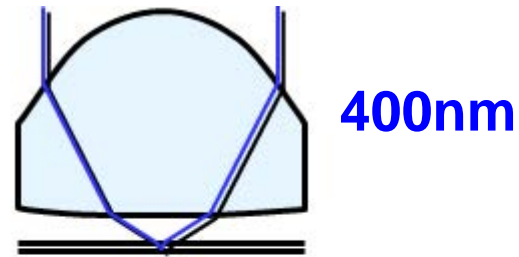
650MB

DVD(1996)



4.7GB

Blu-ray™(2003)



50/100GB

Professional
Archival Disc
(2015)



Archival Disc

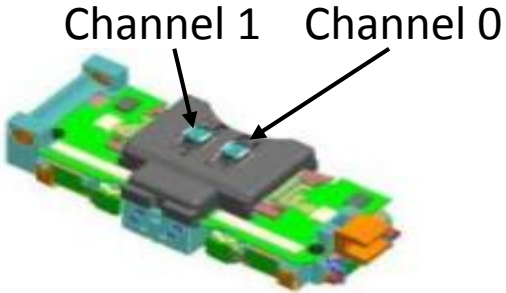
300GB

New Technology for high transfer speed (Gen2 drive)



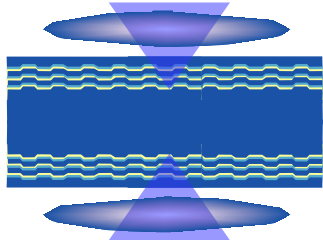
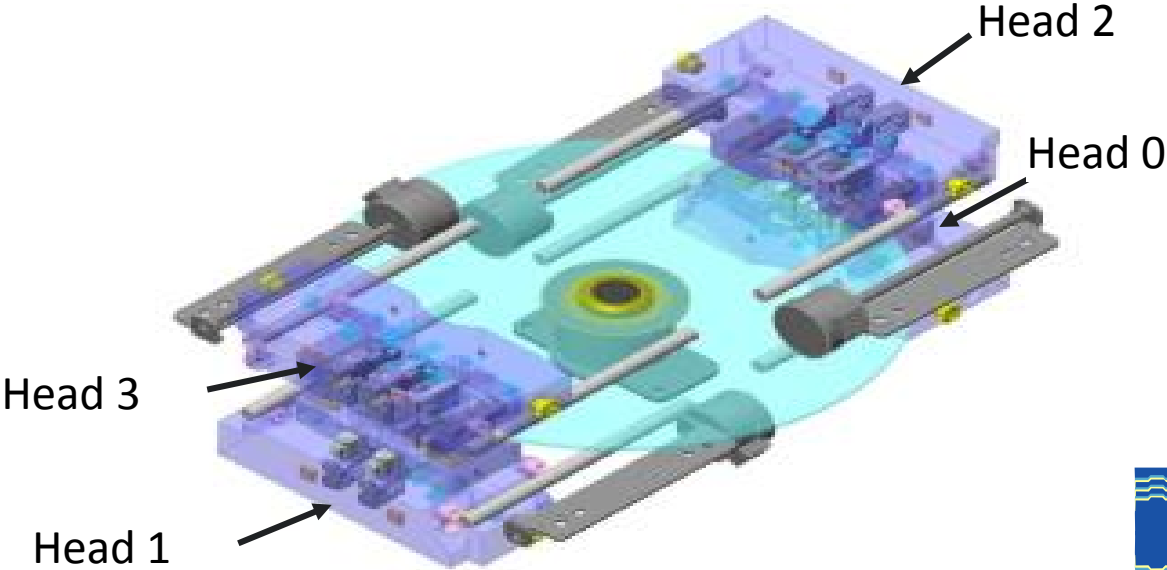
8-channel Drive can handle double-sided disc

2-channel Head



Dual Channel Head Assembly

8-channel Drive



Double Side

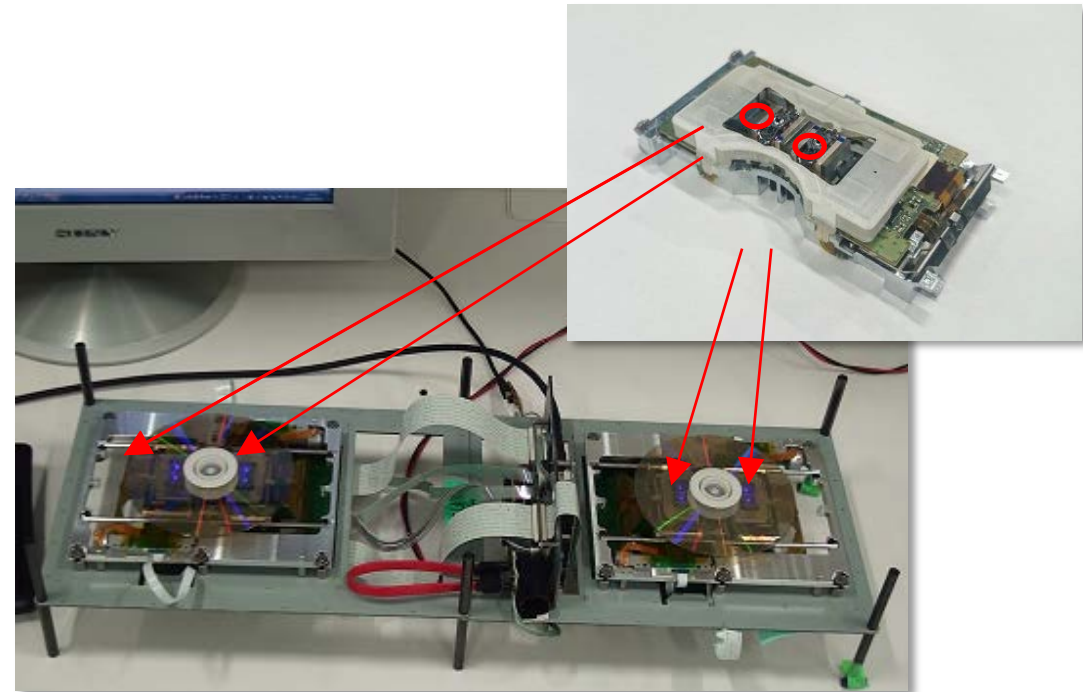
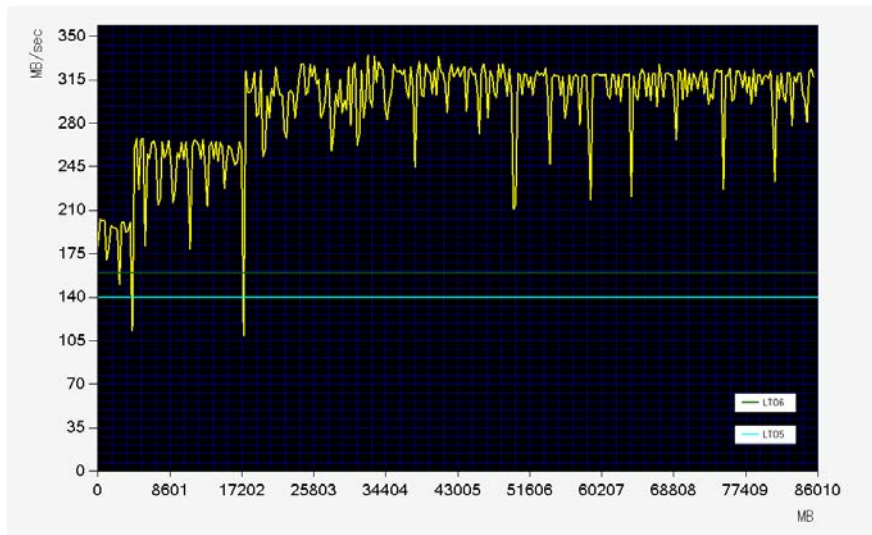
High performance drive



- The worlds 1st 8-CH dual-side drive for highly efficient operation
- Drive transfer rate:
 - Average write 140MB/s (with verification)
 - Average read 280MB/s (peak 315MB/s)
- SATA interface
- High reliability laser

Optical head with 2 CH laser

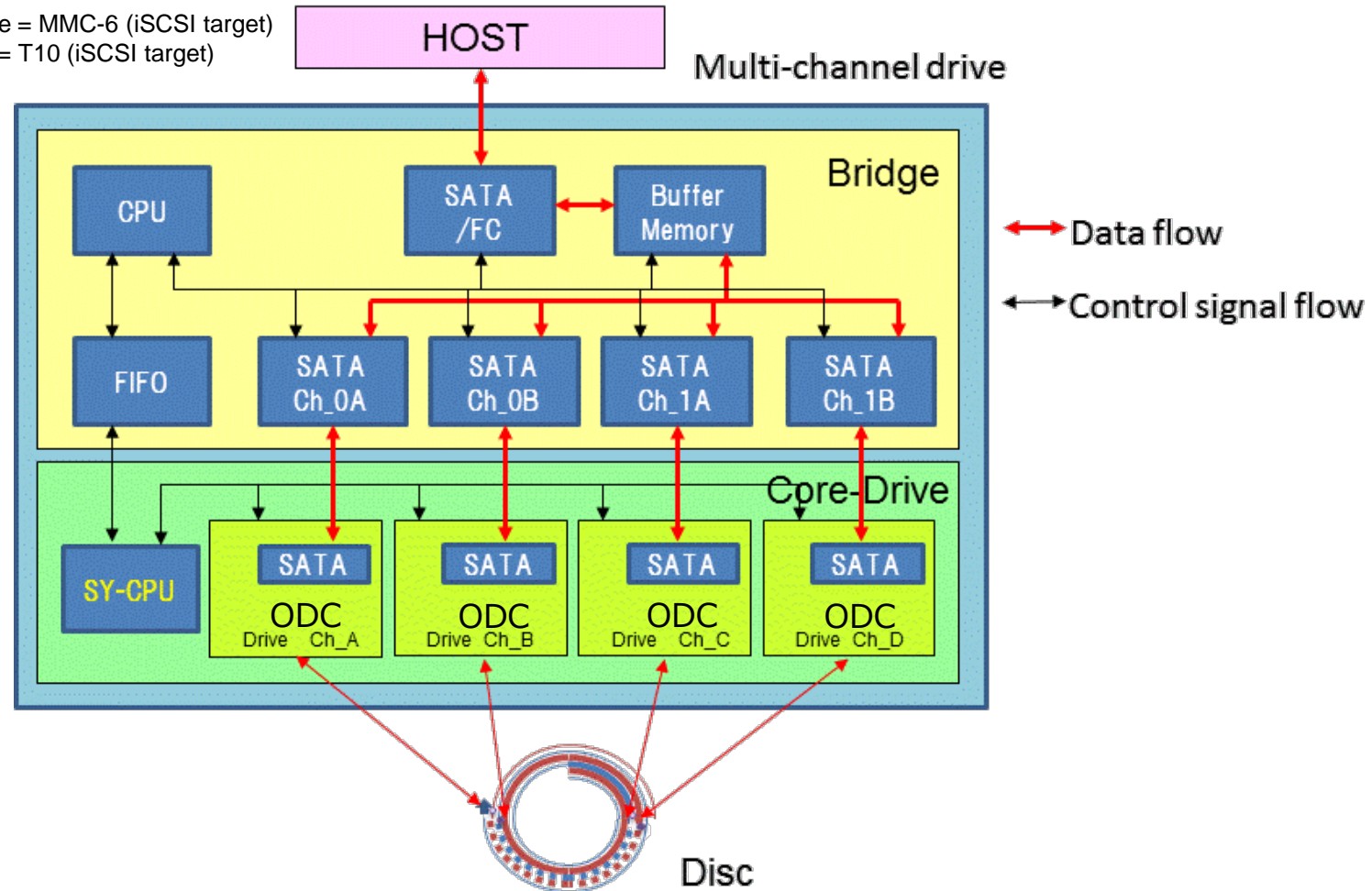
Read transfer rate



Block Diagram of 8ch Drive

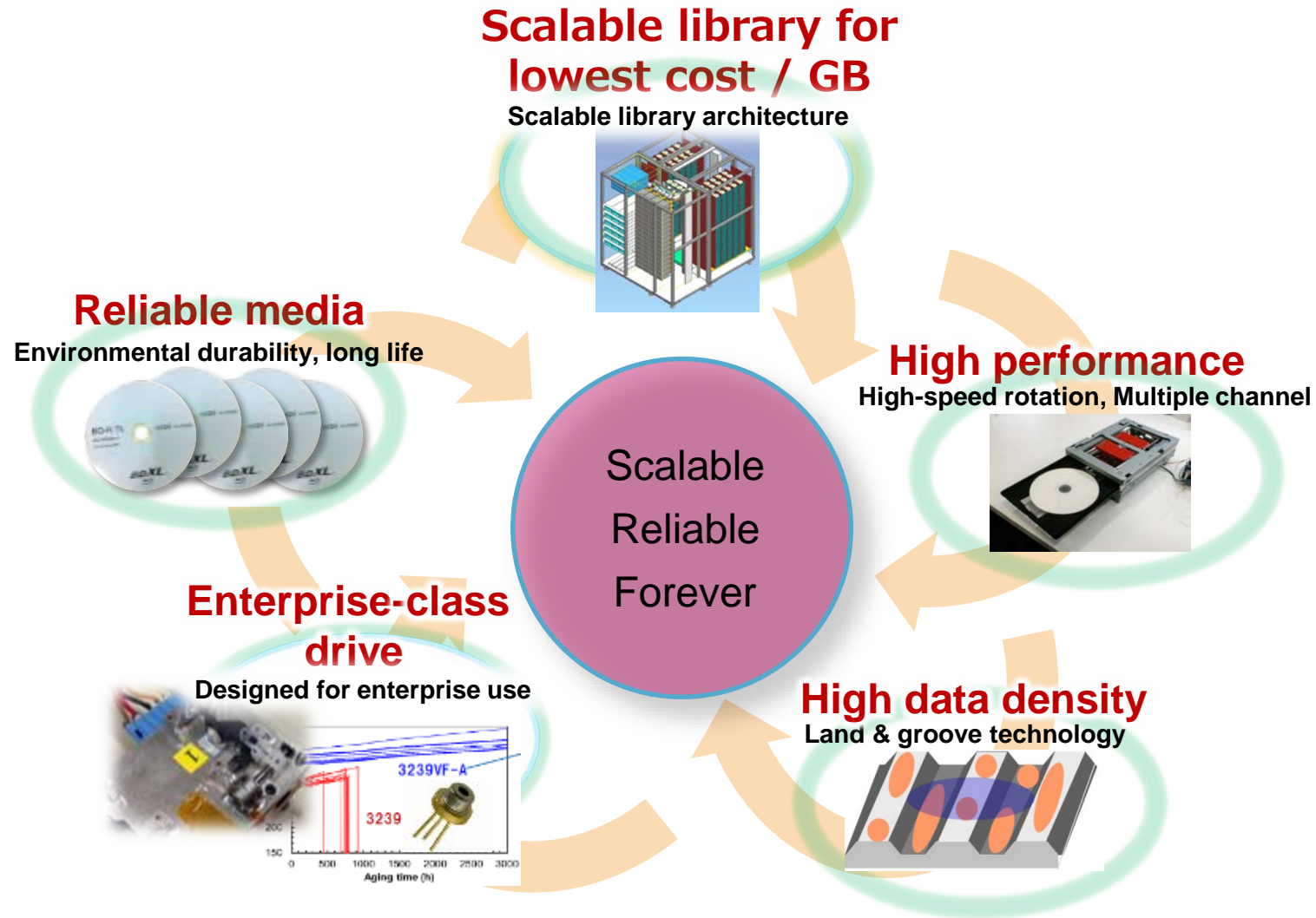


- Optical drive with Optical Interface = MMC-6 (iSCSI target)
- Optical drive with Tape Interface = T10 (iSCSI target)



All channels work together as one drive.

Optical Technology is Optimized for Data Archival



Everspan System

- Expansion units are media racks
 - 64 drives, total bandwidth 18GB/s
 - Each tray has 64x 300GB media (19.2TB per tray)
 - Each Expansion Unit holds 680 trays (13PB capacity)
- Expansion units require nominal power only
 - Scale storage capacity without scaling operational cost
- Scalable to 14 expansion units = 183PB



SONY



SONY is a registered trademark of Sony Corporation.

Names of Sony products and services are the registered trademarks and/or trademarks of Sony Corporation or its Group companies.

Other company names and product names are registered trademarks and/or trademarks of the respective companies.